



LARAMIE WYOMING

— BUSINESS RESOURCE GUIDE —



WHY THE LARAMIE CHAMBER BUSINESS ALLIANCE?

The Laramie Chamber Business Alliance (LCBA) actively works to build a healthy economy in both business retention and attraction. Our primary objective is to attract and retain primary jobs, along with facilitating the expansion and development of existing businesses to achieve sustainable growth, a diverse economy, and improve the economic well-being of the City of Laramie and Albany County. The LCBA actively markets the assets of Laramie and Albany County and advocates for business interest at the local and state level. In conjunction with working to foster business creation and growth, we also work to retain, expand, and promote the local business community.

Laramie.org • 800 South 3rd Street • 307-745-7339

Photos provided by:



03

VALUE PROPOSITION

05

LIVING IN LARAMIE

07

EDUCATION HUB

13

RESOURCES

17

INCENTIVES

19

RECREATION

23

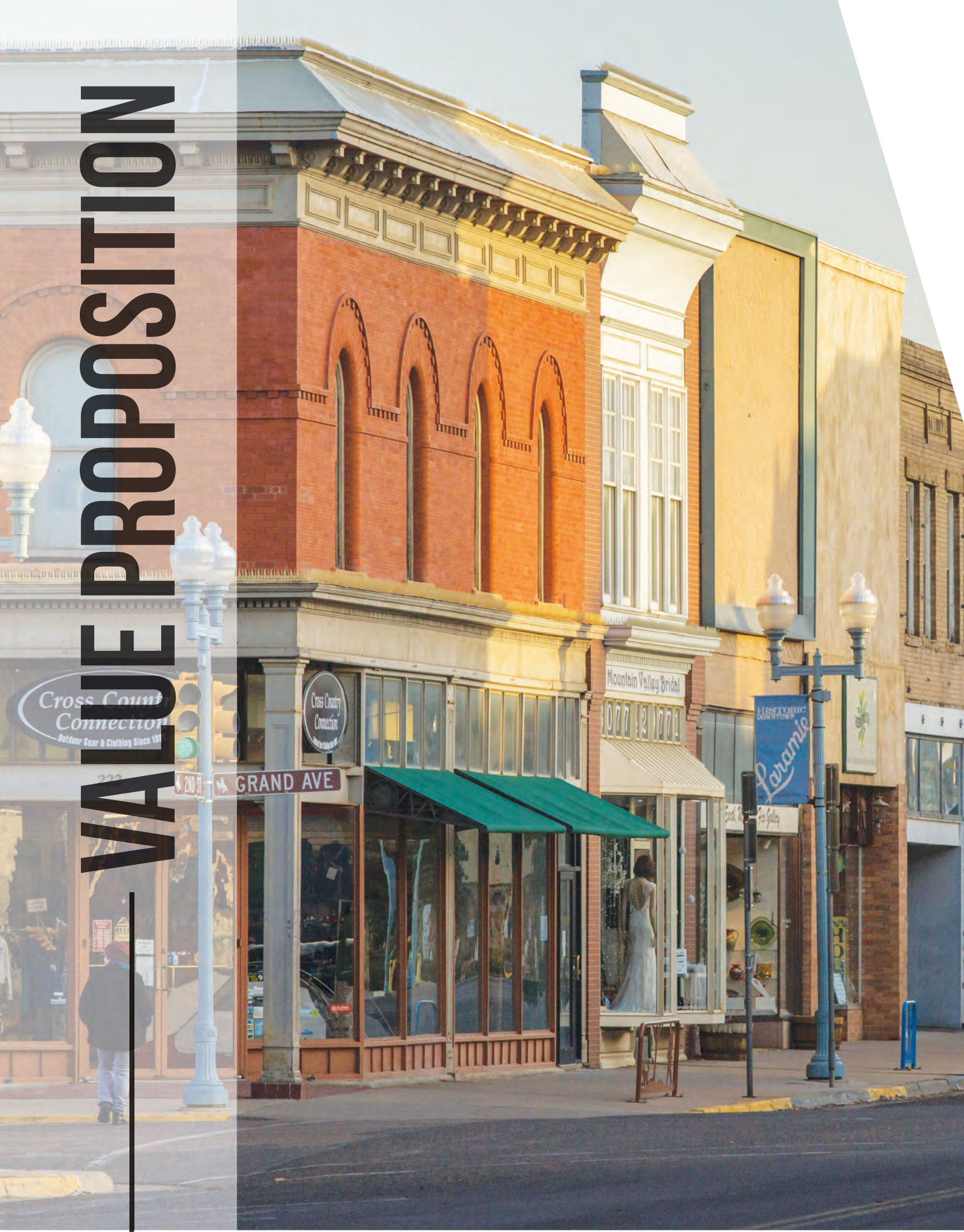
LIVABILITY

25

GEOGRAPHY

TABLE OF CONTENTS

VALUE PROPOSITION



We know that businesses in Laramie make a difference – to their customers, to their employees, to their community, and to the world.

Laramie's value proposition centers around three core attributes:

1 QUALITY OF LIFE

Clean mountain air and sweeping plains are just the start to an outdoor lifestyle second to none. Hiking in the national forest, rock climbing or fly fishing, Laramie's outdoor recreation opportunities are endless, and minutes away. In town you will find a wide variety of things to do: drink locally roasted coffee, enjoy a concert in the park, or cheer on the cowboys at a basketball game. Life at 7200 feet — it's better up here.

2 WORKFORCE

Home to University of Wyoming, Laramie boasts some of the most forward thinking, creative minds, and entrepreneurial spirits. Along with state of the art research facilities, manufacturing, healthcare, and a highly educated workforce, there are graduates from local colleges who want to stay in Laramie.

3 BUSINESS

Say goodbye to the small fish in a big pond mentality, in Laramie your voice is heard. Decision makers are part of your local community and authentic relationships are waiting to be developed with stakeholders who want your business to succeed.



LIVING IN LARAMIE



1
75
winning and dining spots in Laramie

35
winning and dining spots downtown

28
live entertainment venues

105
shopping venues

54
historical sites and museums

90+
artists engaging in economic activity

VIBRANT DOWNTOWN

Downtown Laramie Mural Project: Over 20 large murals in the downtown area by several local artists.

Farmer's Market Downtown Laramie: Every Friday from July through September, with over 90 vendors from the region.

Laramie Main Street Alliance: Strives to preserve history while enhancing downtown's economic and social vitality.

GIVING BACK

The spirit of working together for a better tomorrow is an integral part of the culture in Laramie. With countless hours and financial support already given back to the Laramie community, you'll find endless opportunities to volunteer and support local causes.

- 202 non-profits.
- Over 30 Churches.

United Way of Albany County: Serving 16 agencies in Laramie, unitedwayofalbanycountry.org

EVENTS/CULTURE

University Activities: The University of Wyoming has helped shape Laramie's diverse community and bring weekly entertainment and constant public education opportunities. There is usually a concert or play once a week and multiple sporting events to attend.

Town Celebrations & Rodeos

- **Laramie Jubilee Days:** Wyoming's Hometown Celebration, a midsummer week including a brewfest, rodeos and street dances.
- **Cheyenne Frontier Days:** A tradition spanning over 100 years celebrating the Old West with the world's largest outdoor rodeo and top-name entertainment, held 45 minutes away in the capital city.



EDUCATION HUB





The University of Wyoming: Serving as Wyoming’s only university and four-year post-secondary education institution, all expertise resides in Laramie. Professors are leading globally noted research programs and teaching more than 12,000 students right here in Laramie.

DEGREES AND AREAS OF STUDY ²

80

undergraduate degree programs

90+

graduate degree programs

200+

areas of study

COLLEGES & SCHOOLS ²

College of Business

Accredited by the AACSB, which recognizes fewer than 5% of business schools world-wide.

College of Engineering and Applied Science

Globally known leaders are graduates from the college.

College of Health Sciences

Nationally accredited Pharmacy program with graduates scoring higher than average on national licensure exams.

School of Energy Resources

Home to Shell 3D visualization Center, allowing work with highly complex data sets.

Haub School of Environment and Natural Resources (ENR)

Advances the understanding of resolution of environment and natural resource issues.

Agriculture and Natural Resources

Robust Research Department with top-level graduate students.

College of Arts & Sciences

45th in Earth Sciences in US according to US News and World Report.

College of Education

Courses challenge students to think critically and provide framework for educators of tomorrow.

College of Law

Ranked as Best Value Law School by preLaw Magazine in 2017.



NEW FACILITIES AT UW



Michael B. Enzi STEM Facility

A \$50 million public investment. The facility opened in 2016. It provides 32 teaching laboratories equipped for chemistry, biology, physics, mathematics and computer science. ³



High Bay Research Facility

A \$50 million private-public investment. This facility opened in 2017, it is equipped to carry out large scale research and development to solve energy-related challenges. Meant to host studies and projects to improve understanding in porous media unconventional reservoir production and coal conversion. ³



Energy Innovation Center

A \$25 million public-private investment and home to the School of Energy Resources was completed in 2013. It is a collaborative facility where students, researchers, academic professionals and industry partners can engage in solving challenges in the energy industry. ³



Engineering Education and Research Building

Built to be a learning and discovery continuum to promote innovation and creativity among students and faculty. The Approximately 100,000 square-foot building is the most ambitious construction project in the university's history at \$105 million. ³





Laramie County Community College - Albany County Campus ⁴

Over 26 degree programs including:

- Accounting
- Computer Information Systems
- Engineering

Working with the community

- Workforce Development: Working with an organization to provide workforce and technical training classes.
- Professional Development: Achieving performance, productivity and profitability goals with customized training.
- Job Training: Working with local partners to provide on-the-job training.



WORKFORCE/ TALENT ⁵

State of Wyoming
unemployment

4.3%

Albany County
unemployment

2.8%

Albany County labor force

21,338

Strong inflow of commuters
into Albany County:

628

Per day from Laramie County, WY
Larimer County, CO
and other Colorado Counties

4.85 ⁶

College graduates per
open position
(in Laramie/Cheyenne)

As of 2018



K-12 EDUCATION

Albany County School District – acsd1.org

Holds a vision of entrusting and empowering everyone to excel with values in engagement, collaboration, equity, and transparency.

15

**schools in the
county**

800

**faculty and
staff**

4000

**students in
Albany County**

Laramie Montessori School - laramiemontessori.org

A tuition-free charter school with a mission to support the development of the whole child through an authentic Montessori environment.

Snowy Range Academy - snowyrangeacademy.org

Serving grades K through 8, this tuition-free public charter school emphasizes academics and focuses on parental involvement

University of Wyoming Lab School – acsd1.org/lab

A long-standing history spanning over 130 years with a unique setting on the University of Wyoming campus, serving K through 9 with research-based education.



HEALTHCARE/HOSPITALS

Laramie boasts a wide variety of medical services, including specialized medical providers, private practices, urgent care clinics and a hospital that is part of a nationally ranked network.

Ivinson Memorial Hospital:

The Hospital is one of the largest employers in Albany County, serving Laramie for over 100 years and providing integrated, innovative healthcare in a state-of-the-art facility. ⁷



IVINSON BY THE NUMBERS ⁷

99

licensed hospital beds

43,107

annual hospital inpatient and outpatient visits

7

minute ER wait, average time from door to doctor

420

babies delivered per year

492

total employees



RESOURCES

GRANTS & FINANCIAL SUPPORT⁸

Business Ready Community Grants

Grants are typically between \$1 million and \$3 million through the Wyoming Business Council.

Workforce Training Grants

Grants average between \$1,000 and \$4,000 per employee through the Department of Workforce Services.

Trade Show Incentive Grants

Grants range from \$500 to \$1,500 through the Wyoming Business Council.

LCBA Revolving Loan Fund Program

This fund helps new and existing business in obtaining financing through local institutions. The LCBA Revolving Loan Fund Program controls approximately \$100,000.



Collateral Support Program

This program is operated by the Wyoming Smart Capital Network funded by the U.S. Department of Treasury's State Business Credit Initiative (SSBCI). Designated working capital loans, it provides cash collateral on the borrower's behalf. It helps small businesses overcome the challenge of insufficient collateral.

Wyoming Partnership (Challenge) Bridge Loan Program

Loans are provided through the Wyoming Business Council (WBC) in partnership with a local lender. The business must provide at least 15% of the total project cost. The State of Wyoming can participate up to 35% of the project cost or \$500,000, whichever is lesser.

Wyoming Partnership (Challenge) Guaranteed Loan

Loans are provided through the Wyoming Business Council (WBC) in partnership with a local lender. The loan must have a Federal Guarantee (SBA or Rural Development B&I). The State of Wyoming can participate up to 50% of the project cost or \$1,000,000, whichever is lesser.



In 2014, Laramie was chosen from 14 different cities throughout the US for location of a new technology center for the following reasons:

- **Prospect of Cirrus Park**
- **Workforce training funds**
- **Access and interest from the University of Wyoming to establish a recruiting pipeline**
- **Anticipated strong employee retention**
- **Close proximity to the UL IDES - a private company acquired by UL in June 2012**

- Randal Six - IT Manager, Laramie Tech Center, Underwriters Laboratories



COMMUNITY PARTNERS

Laramie Main Street Alliance strives to preserve historic downtown Laramie while enhancing its economic and social vitality. As a 501 c 3, its services are free to any business or building owner in the Downtown Development Authority boundaries. LMSA assists businesses with finding locations, marketing, promotions, retention, expansion, training, grants, historic preservation and design, as well as networking and cross promotion with other entrepreneurs.
307.760.3355 // www.laramiemainstreet.org

Albany County Tourism promotes travel and tourism to the Laramie area through a variety of regional and national channels. They showcase Albany County as a multi-season destination that has endless possibilities and helps visitors realize the area's full potential. ACT supports many local programs and activities in Albany County which further enhances the quality of life.
307-745-4195 // www.visitlaramie.org

Small Business Development Center consists of a network of offices throughout the state with business consultants who provide free and confidential business consulting, classes, webinars, publications, online services, and referrals to related agencies. Other

major services within its offices includes providing free market research and The Wyoming Procurement Technical Assistance Center, which helps Albany County businesses gain HUB-zone certification among other government registrations and assists businesses sell products and/or services to government. The Wyoming SBDC offers free assistance with business plans, cybersecurity, eCommerce, financial evaluation, international trade, QuickBooks, sustainability and other services.
307-766-3505 // www.wyomingsbdc.org

Manufacturing-Works is the Manufacturing Extension Partnership for the State of Wyoming. The non-profit organization seeks the continued success and constant economic progress for Wyoming through timely and customized assistance to entities requiring its services. Targeting small to mid-size manufacturers and businesses, M-W's services comprise of workforce development trainings and workshops, technology assistance, business advising and customized performance assistance. A national network of public and private partnerships helps bring cutting edge resources to manufacturers and businesses of Wyoming.
307-766-3056 // www.manufacturing-works.com



Wyoming Technology Business Center focuses on developing early stage, technology-based companies, with an emphasis on high-growth firms. All companies located in the incubator receive one-on-one business counseling and executive coaching services provided by the WTBC staff based on their stage of development. WTBC's programming is designed to help client companies grow larger and faster than they would otherwise, and to increase the ability of entrepreneurs to grow and manage their own businesses. Facilities offer a variety of laboratory, office, shared conference room space, and a state-of-the-art data center.
307-766-2030 // www.uwyo.edu/wtb

Wyoming Women's Business Center is designed to offer Wyoming's current and prospective business owners the business assistance they need, including access to business counseling, capital, microloans, training, technical assistance, and networking opportunities.
307-460-3943 // www.wyomingwomen.org

Wyoming Business Council is the State of Wyoming's economic development agency. The Business Council works with private businesses, state agencies, local governments, local economic development groups, partners, and nonprofits to grow and diversify Wyoming's economy, create jobs and enhance quality of life. The council offers a variety of programs to assist Wyoming businesses including grant and loan programs.
307-777-2804 // www.wyomingbusiness.org

City of Laramie, The Planning Division has two major functions: development review and long-range planning. The development review entails reviewing and processing subdivision and zoning applications, planned unit developments, conditional use permits, variances, and zone changes. Long-range planning entails writing and updating documents with relation to the physical development of the City. This division also serves as staff to the Planning Commission and advises City Council on matters concerning planning and land use.
307-721-5200 // www.cityoflaramie.com



INCENTIVES



MEDIAN WAGE

Hourly wages for specialized professions	Median household income	Per capita income
\$30.06	\$40,240	\$22,404

CUSTOMIZED INCENTIVES

LCBA understands that each business not only offers unique advantages to the community, but has unique needs as well. Therefore, the LCBA staff is willing to work with interested businesses on a one-on-one basis to develop specific strategies and possible incentives.

TAXES & TAX EXEMPTIONS⁹

- ▶ **State Income Tax:** Wyoming has no corporate or personal income tax.
- ▶ **Business Inventory Tax:** Wyoming imposes none.
- ▶ **Property Tax:** Wyoming property taxes are some of the lowest in the USA.
- ▶ **Sales Tax:** The State of Wyoming's sales tax is 4%. In Albany County the sales tax is 6%, due to an additional 1% sales tax and 1% special use tax.
- ▶ **Sales & Use Tax Exemptions:** Wyoming imposes no sales tax on energy consumed in the process of manufacturing. Wyoming imposes no sales tax on the purchase of equipment that will be used in the manufacturing process. There are also sales tax exemptions for certain equipment purchased for data centers.



OTHER INCENTIVES:

- ▶ **Connectivity with Government:** Businesses can access and build relationships with local, state and national representatives. Companies in Laramie, Wyoming can enjoy accessibility that other states simply can't provide. For example, the governor meets with interested companies regularly to hear needs and establish long-term relationships.
- ▶ **HUBZone:** HUBZone – Albany County is a Historically Underutilized Business Zone (HUBZone) determined by the United States Small Business Administration. This includes gaining government contracts. By meeting certain criteria, like having your principal office in Albany County and employing local workforce, you could qualify for several federal incentives. ¹⁰
- ▶ **Rural Energy for America Program (REAP) from USDA:** A federal program by the U.S. Department of Agriculture with grants available up to \$500,000 for using renewable and efficient energy sources. ¹¹

* Hathaway scholarships are designed to provide an incentive for Wyoming students to prepare for and pursue post-secondary education with the State of Wyoming.

ADVANTAGES FOR BUSINESS ⁹



- No corporate state income tax
- No manufacturing tax or equipment sales tax



- Low worker's compensation rates
- Low operating costs

ADVANTAGES FOR BOTH BUSINESSES & FAMILIES



- Low property tax
- Low sales tax rates
- Low utility rates

ADVANTAGES FOR EMPLOYEES (FAMILIES)



- No personal state income tax
- No state estate or inheritance tax



Hathaway scholarships*



OUTDOOR RECREATION



HIKING, BIKING AND CAMPING



HUNTING



DOWNHILL



CROSS COUNTRY SKIING



46¹²
trailheads and
campgrounds within
an hour from town

Over **100**²
miles of mapped
mountain bike
trails

1.5¹³
million acres of Medicine
Bow National Forest
within 40 minutes

26 areas within **50**¹ miles of Laramie

Ski locally at Snowy Range Ski Area:¹⁴

250
acres of ski area and
over 30 runs

245
inches of annual
snowfall

45
minutes from
downtown

SKIING

Aspen, Vail and Steamboat Springs are within a
few hours of Laramie.



SNOWMOBILING

Over **300**
square miles
to explore

40
minutes from
Downtown Laramie

One of the finest snowmobiling
playgrounds in the world.¹⁵

30
trails 20 minutes
from downtown

Over **100**¹⁶
miles of trails within
an hour of town



IN-TOWN RECREATION

17

parks and
greenspaces

5.4

acres of
greenspace/
1,000 people

“Laramie is a great town to grow a business and raise a family in. If you enjoy and value the outdoors it’s hard to beat. Fishing, hunting, hiking, biking, climbing.... The list goes on, all at your doorstep. For me I like the idea of building a business in a place that offers opportunity, but also has strong ties to the past - a history and relationship with the environment that keep you grounded. I want my kids to grow up in that kind of a place.”

- Nate Storey, Co-Founder of Bright Agrotech & Plenty

- 8** soccer fields
- 7** baseball & softball fields
- 5** basketball courts
- 3** fishing ponds
- 2** tennis courts
- 2** sand volleyball courts
- 2** golf courses
- 1** skatepark
- 1** disc golf course



PATHS FOR WALKING, JOGGING & BIKING¹⁷

GREEN BELT PATH:

6

miles next to Laramie River

CIRRUS SKY TECH PARK TRAIL:

1.75

miles of paved trail with views

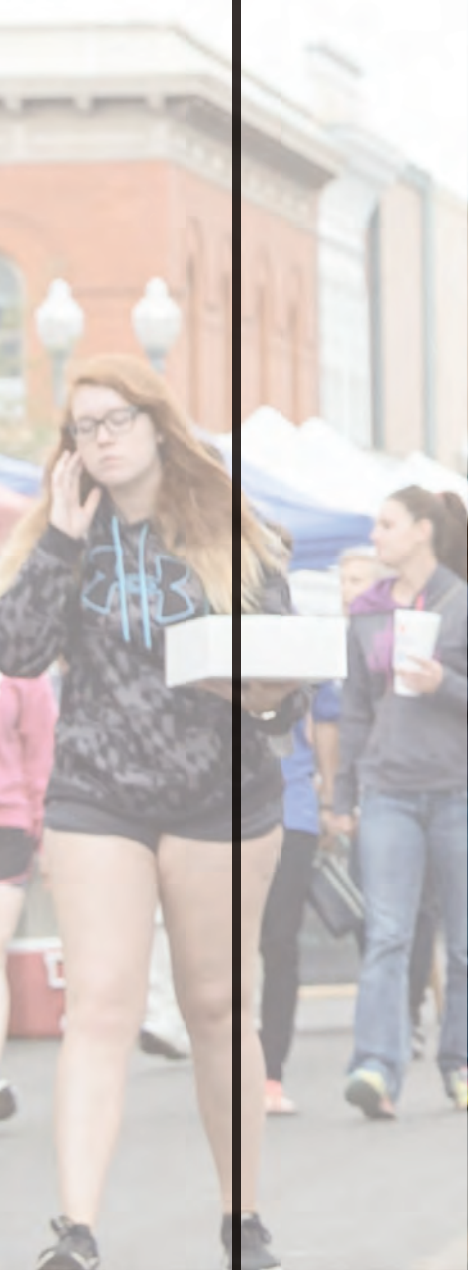
BIKE TRAILS:

11.5

miles throughout town



LIVABILITY



	CITY	AMENITIES	EDUCATION	COST OF LIVING	EMPLOYMENT
79	Laramie	A+	B	C+	C
76	Fort Collins	A+	C	D	C-
73	Loveland	A+	D	D	C
63	Denver	A+	F	D-	C-
63	Salt Lake City	A+	C	D+	D+

11.35 minutes is Laramie's average commute time. It's not uncommon to get to work in 5 minutes or less.

79 Overall score - extremely livable!



POPULATION:¹⁹
38,256

Average age: 27 years old
 Under 18: 6,336
 18-24: 10,847
 25-44: 10,047
 45-64: 6,993
 65+: 4,038



EDUCATION²⁰

High School
 diplomas: 95.7%

Bachelor's
 Degree or higher:
 49.5%

HEALTH¹⁸

83% active
 lifestyles



**RESIDENTIAL
 REAL ESTATE
 AVERAGES**²⁰

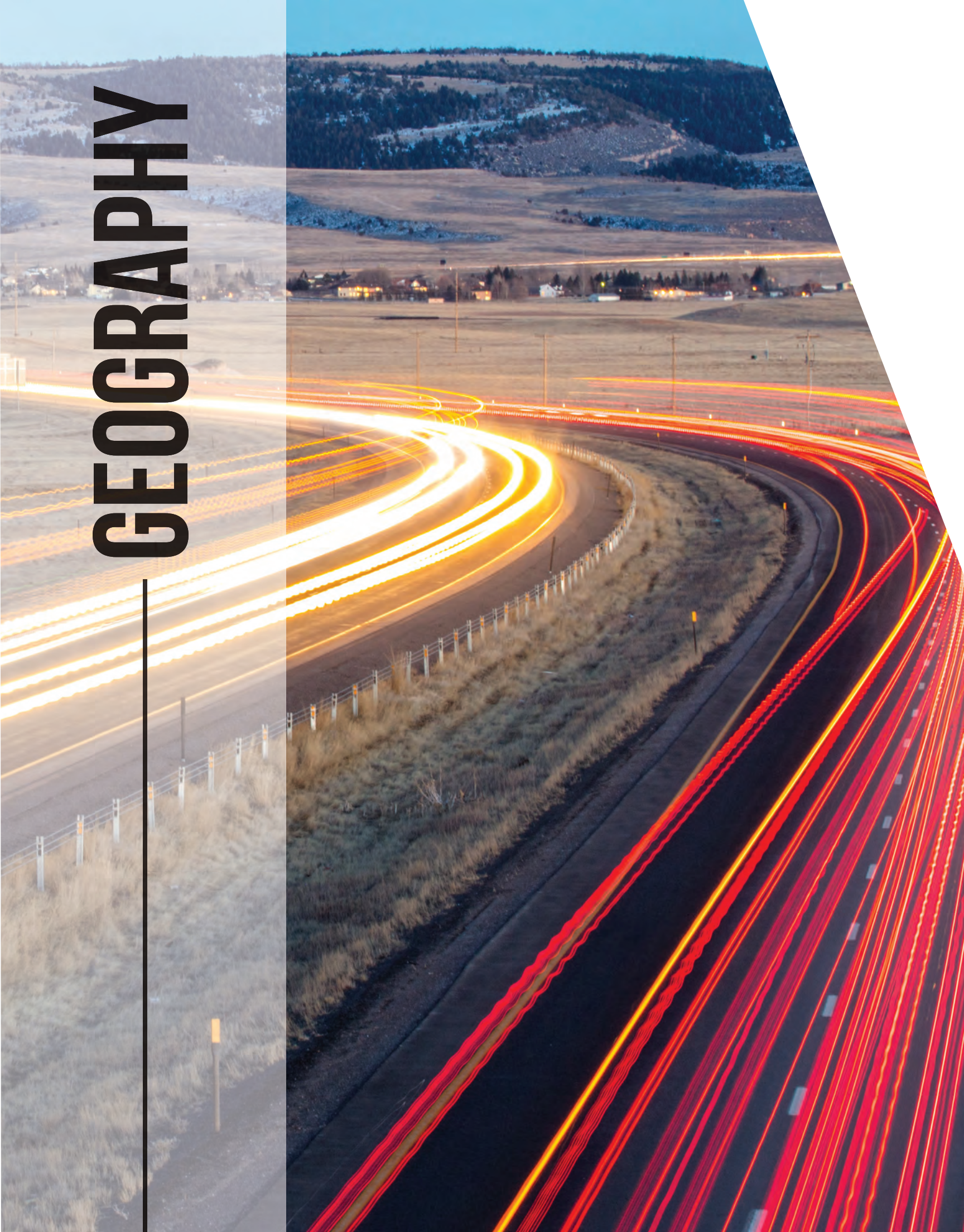
Home value:
 \$206,700

Rent per unit:
 \$728

Average
 appreciation/year:²¹
 2.7%



GEOGRAPHY



STRATEGIC LOCATION

Strategically located along Interstate 80, Laramie is your gateway to streamlined logistics. Whether by truck, plane, or rail, Laramie offers premier access to the Front Range and beyond.

45 minutes Cheyenne, WY 51 miles	1 hour Fort Collins, CO 64 miles	2 hours Denver, CO 131 miles
---	---	---

Laramie Regional Airport (LRA), partnering with SkyWest (flying as United Express), provides daily jet service to Denver International Airport. Flying LRA you can expect reliable service, convenient connections, short security lines and free parking. Average flight time from take-off to landing is under 25 minutes.²²



CITATIONS: 1) ENDOW Regional Assessment 2) University of Wyoming View Book from the University of Wyoming Office of Admissions 3) www.uwyo.edu/ceas/engineering-initiative/facilities.html 4) Laramie County Community College Albany County Campus Staff 5) Wyoming Department of Workforce Services: Annette Mello 6) US Department of Education 7) Iverson Memorial Hospital: Kendle Dockham 8) Wyoming Business Council: Wyomingbusiness.org 9) Laramie Chamber Business Alliance: Laramie.org 10) sba.gov/contracting/government-contracting-programs/hubzone-program 11) rd.usda.gov/programs-services/rural-energy-america-program-renewable-energy-systems-energy-efficiency 12) US Forest Service 13) fs.fed.us/land/staff/lar/2007/TABLE_4.htm 14) snowyrangeski.com/the-mountain 15) albanylodge.com/winter-activities 16) Medicine Bow Nordic Association 17) City of Laramie: Cityoflaramie.org 18) Areavibes.com 19) Census.gov 20) ai.wyo.gov/economic-analysis 21) proximityone.com 22) Laramie Regional Airport

CONSIDER THE POSSIBILITIES

- No corporate or personal state income tax
- Multiple long haul fiber optic providers
- Home of the University of Wyoming
- Labor training support grants
- University research facilities
- Highly educated workforce
- No manufacturing tax

CIRRUS SKY TECHNOLOGY PARK



HOME TO UNDERWRITERS
LABORATORIES WYOMING DIVISION
LARAMIE, WYOMING BEYOND
THE ORDINARY
307-745-7339

100+ acres ready for
development

